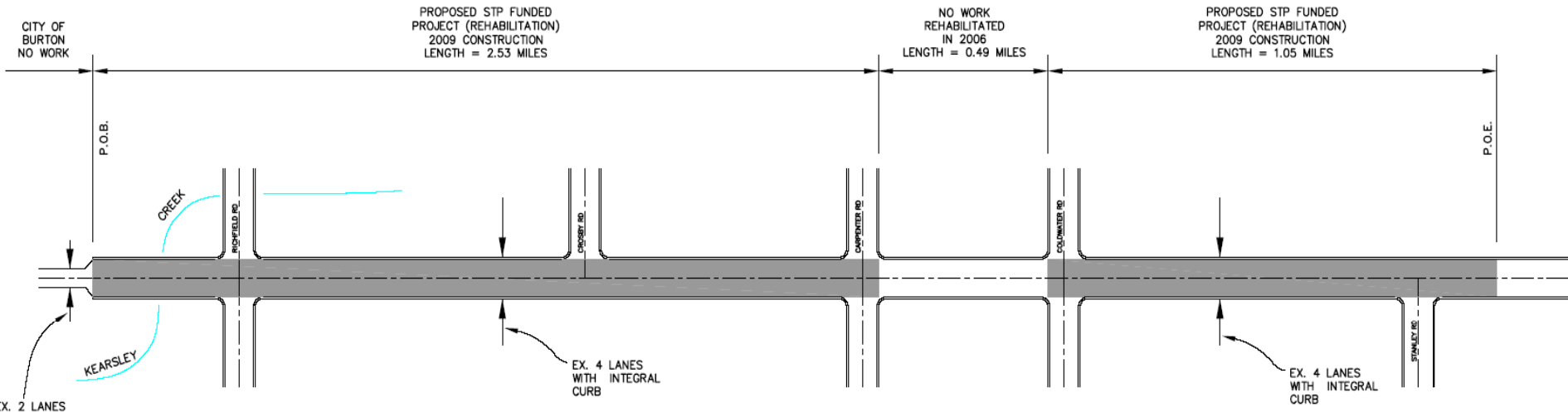


Genesee Road Rehabilitation Program Burton City Limit to Stanley Road



NOT TO SCALE

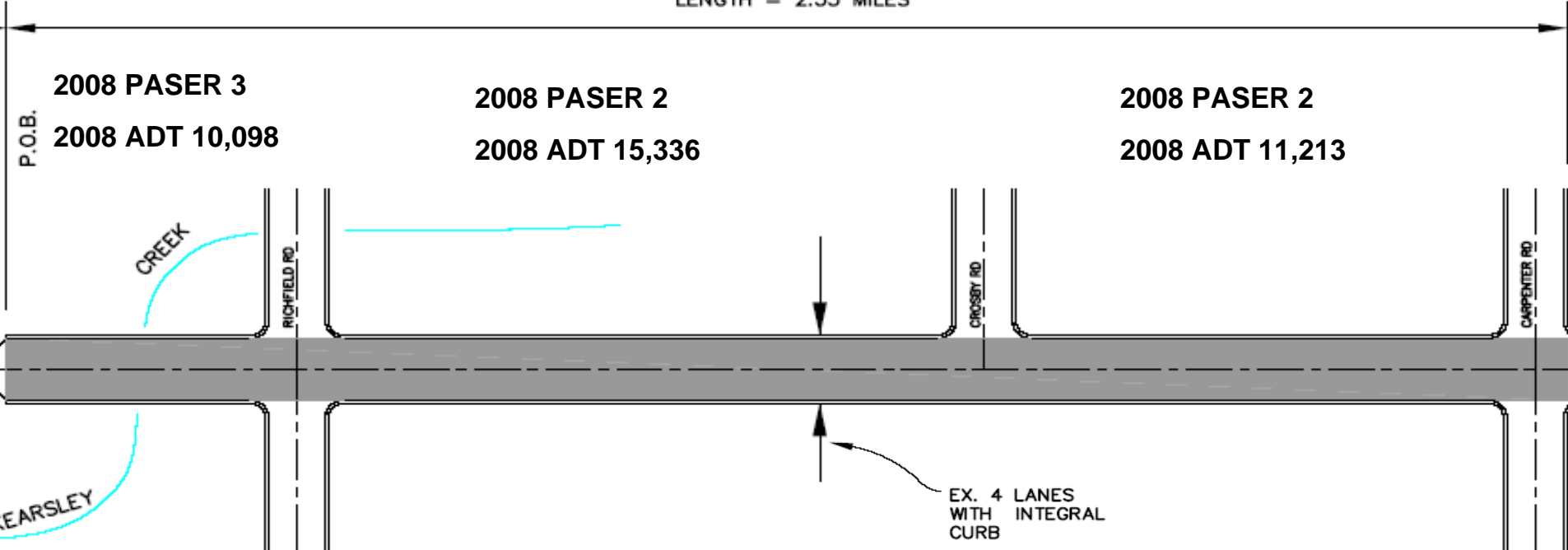


Stage 1

Burton City Limit to Carpenter Road

Remove Asphalt Surface, Concrete Repairs, New Asphalt Surface

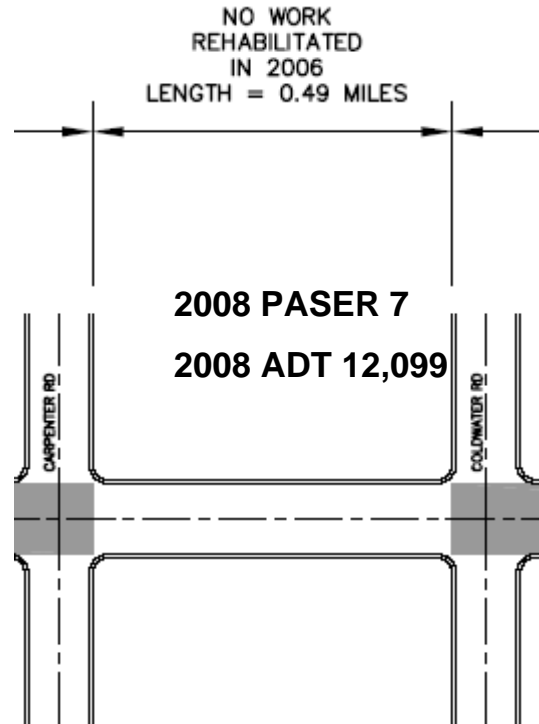
PROPOSED STP FUNDED
PROJECT (REHABILITATION)
2009 CONSTRUCTION
LENGTH = 2.53 MILES



YEAR OF IMPROVEMENT	TYPE OF IMPROVEMENT
1964	2 Lanes Concrete
1974	Widen to 4 Lanes Concrete

YEAR OF IMPROVEMENT	TYPE OF IMPROVEMENT
1955	2 Lanes Concrete
1973	Widen to 4 Lanes Concrete
1993	Microsurface Center Lanes
1997	Microsurface Center Lanes

Carpenter Road to Coldwater Road



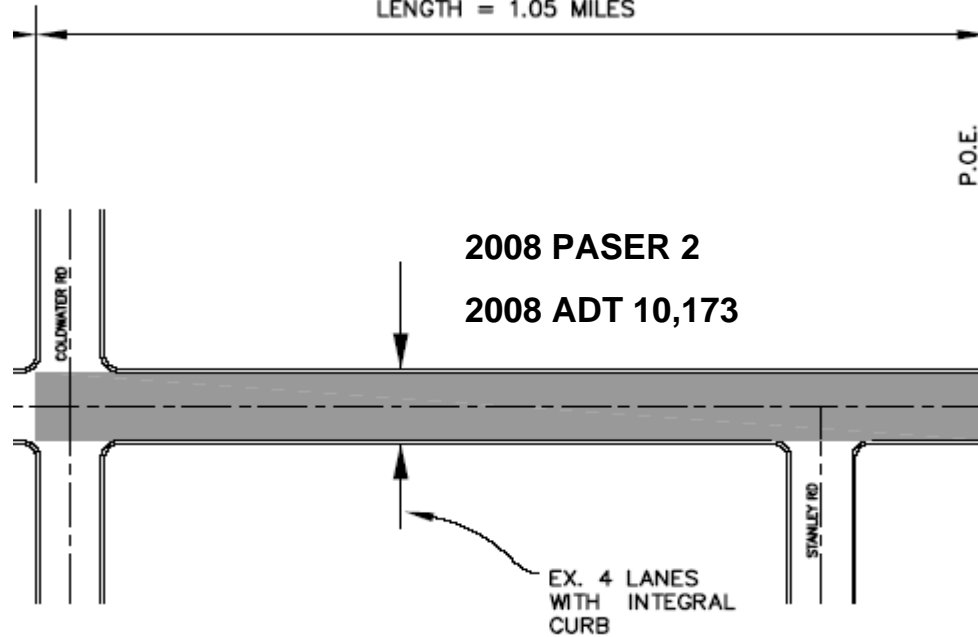
YEAR OF IMPROVEMENT	TYPE OF IMPROVEMENT
1955	2 Lanes Concrete
1973	Widen to 4 Lanes Concrete
1993	Microsurface Center Lanes
1997	Microsurface Center Lanes
2006	Concrete Repairs/Asphalt Resurfacing

Stage 2

Coldwater Road to Stanley Road

Remove Asphalt Surface, Concrete Repairs, New Asphalt Surface

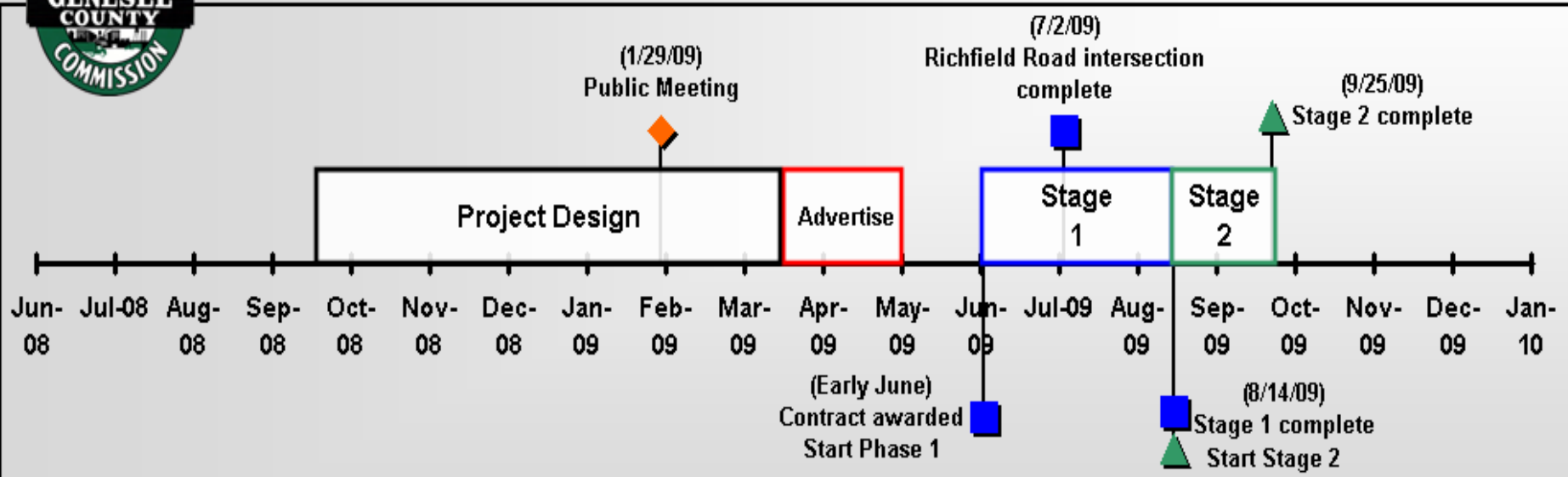
PROPOSED STP FUNDED
PROJECT (REHABILITATION)
2009 CONSTRUCTION
LENGTH = 1.05 MILES



YEAR OF IMPROVEMENT	TYPE OF IMPROVEMENT
1955	2 Lanes Concrete
1973	Widen to 4 Lanes Concrete
1993	Microsurface Center Lanes
1997	Microsurface Center Lanes



Genesee Road Rehabilitation Program Estimated Timeline



Note 1: Dates are approximate and subject to change.

Note 2: No work to be performed 4th of July and Labor Day periods.

Note 3: Minimum of 2 lanes (1 NB and 1 SB) will remain open during construction stages.

Revised: January 29, 2009

Stage 1 is Burton City Limit to Carpenter Road

Stage 2 is Coldwater Road to Stanley Road