



Public Informational Meeting Agenda

Dort Highway Extension

Thursday June 30, 2016

1. Project Background:

- Project Purpose and Need

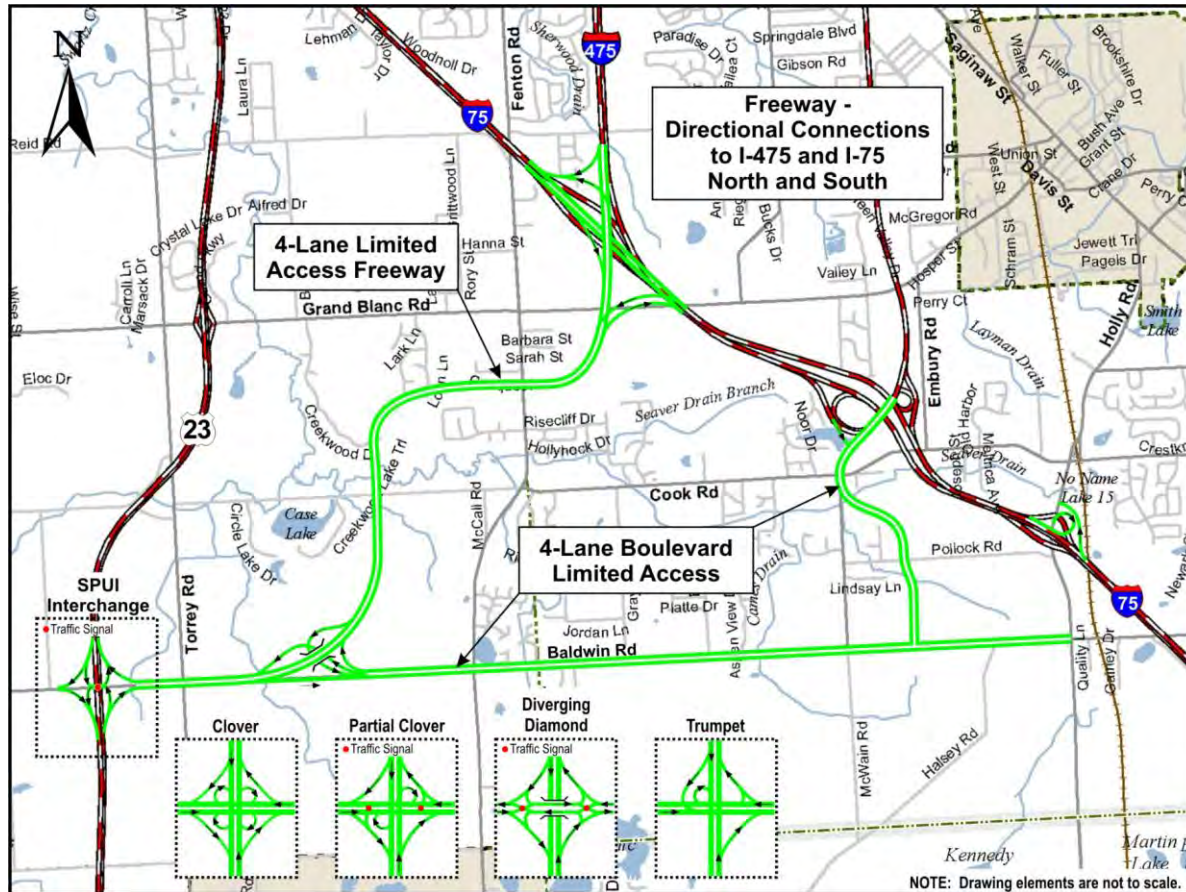
2. Route Alternatives and Environmental Assessment:

- Option 1 with Roundabout Ramp Connections
- Option 1 with Terminal Ramp Connections
- Option 2 with Roundabout Ramp Connections
- Option 2 with Terminal Ramp Connections
- McWain Road Option
- Environmental Considerations

3. Schedule (as of June, 2016):

- Environmental Assessment complete by October, 2016.
- Design and Right of Way by Mid-2017.
- Project construction completion by December, 2018.

2011 Genesee County Freight and Connectivity Study

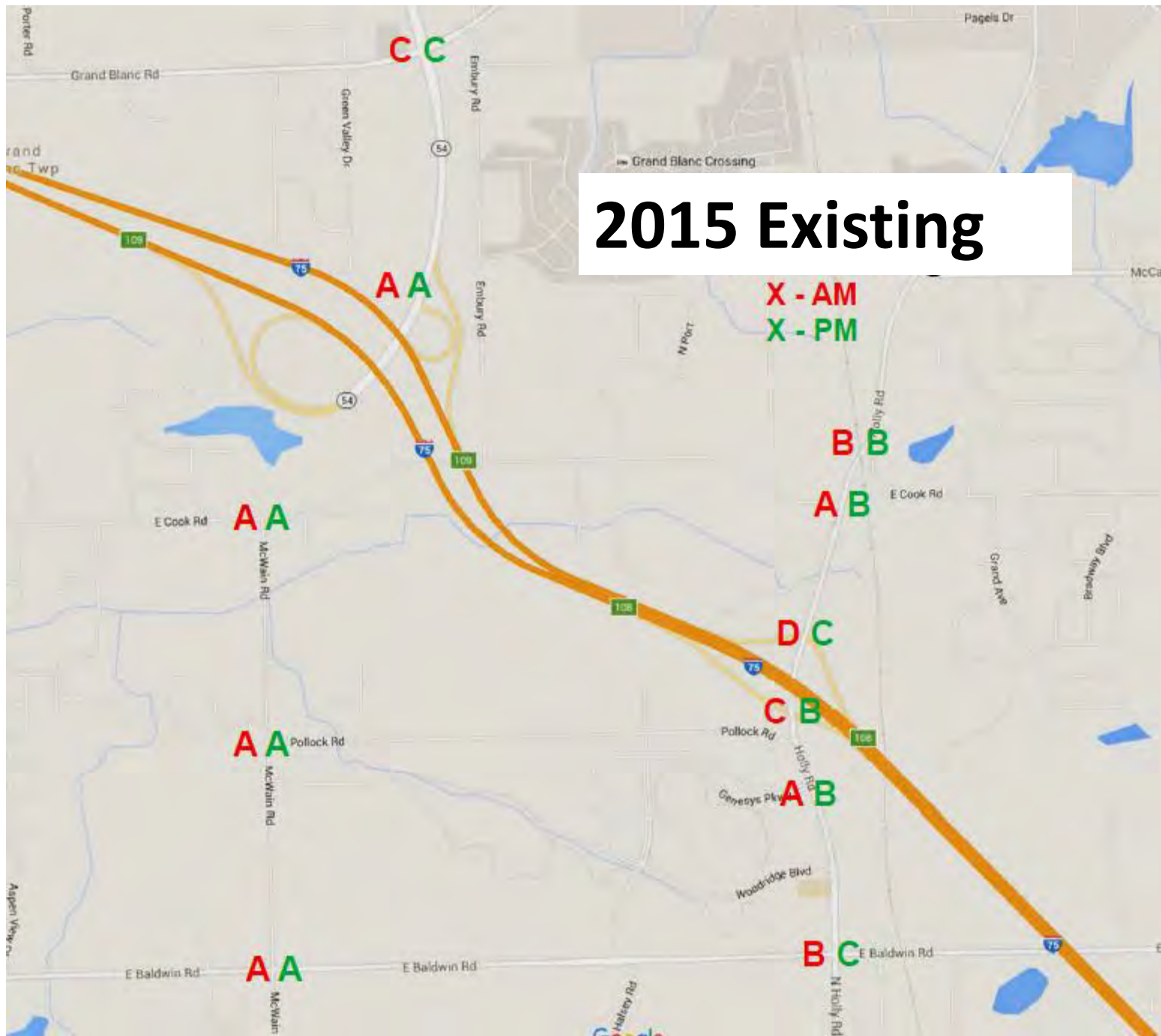


Dort Highway Extension Traffic Study

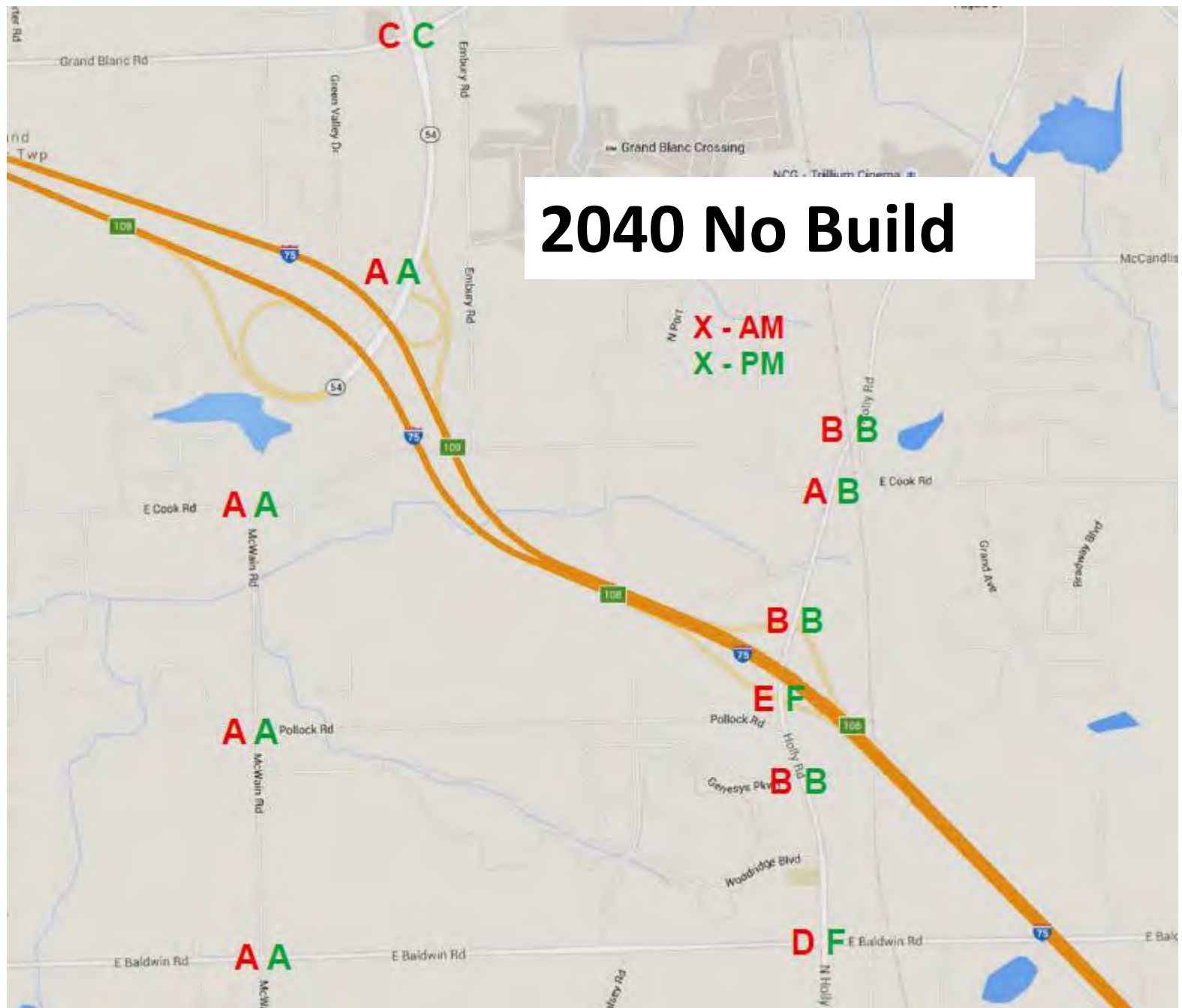
MDOT

April 13, 2016

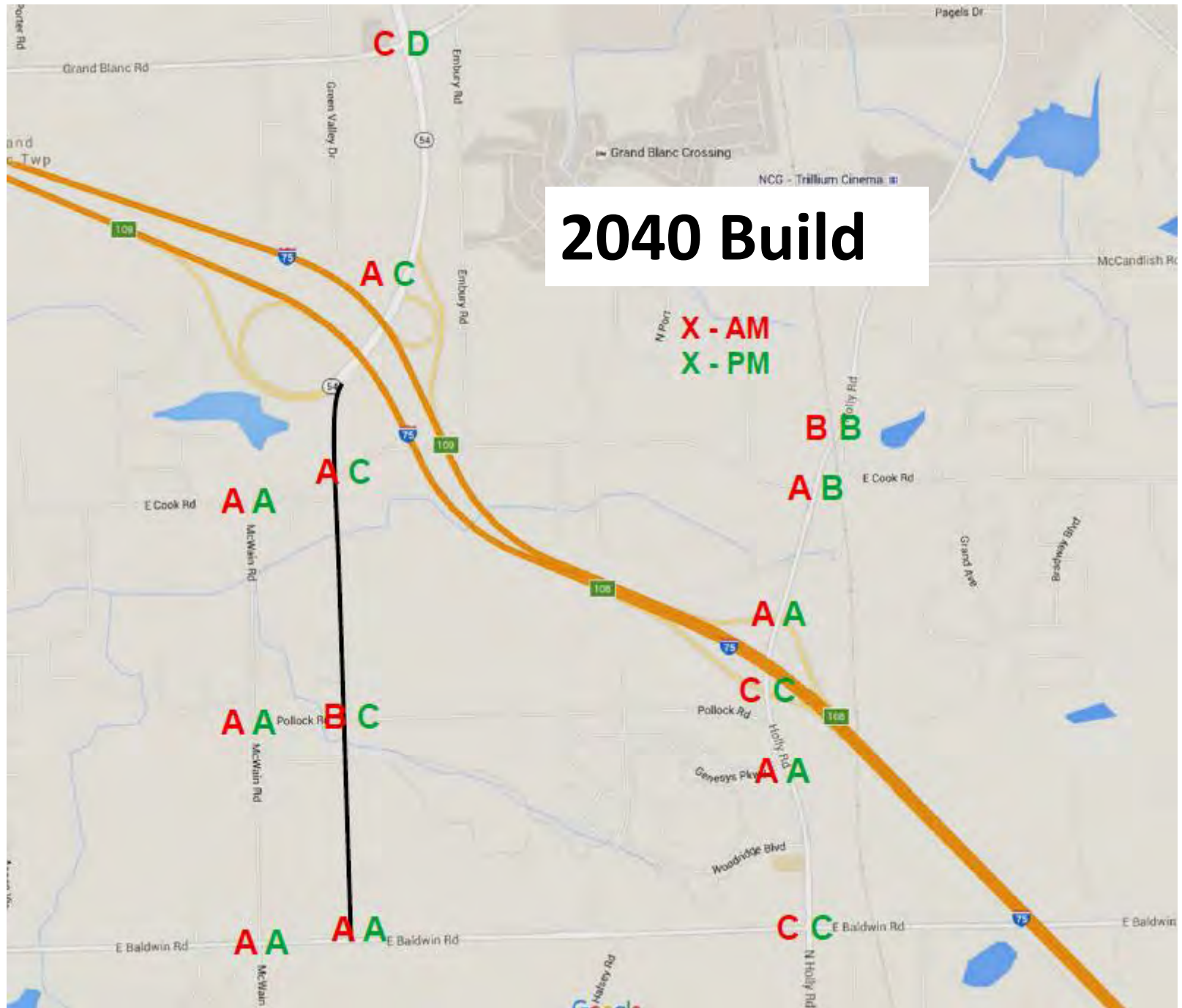
2015 Existing



2040 No Build



2040 Build



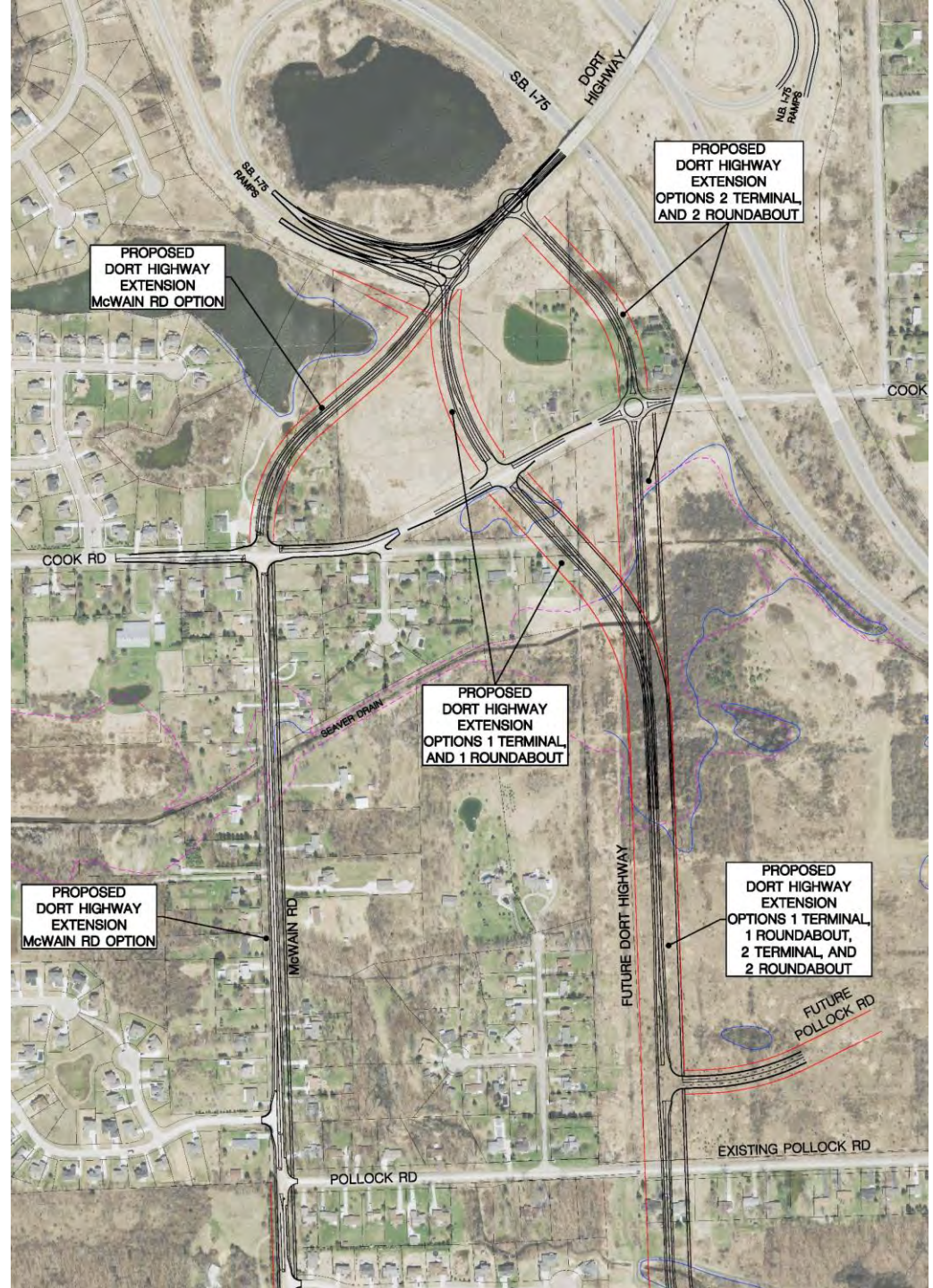
ALTERNATIVE ROUTES & ENVIRONMENTAL IMPACTS



Concept - Land Use and Building Form
GENESSEE COUNTY MEDICAL/RESEARCH CAMPUS

Illustration By: The Corradino Group 11-23-10

3 BASIC ALTERNATIVE ROUTES



DORT HIGHWAY ALTERNATES

OPTION #1 ROUNDABOUT

DATE: 5-25-18

Legend

- Proposed Right of Way
- Parcel Line
- Wetland Boundary
- Floodplain



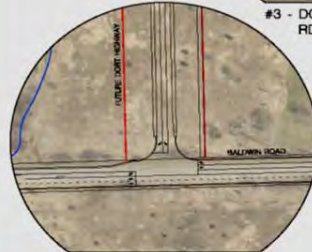
#1 - NORTHBOUND I-75 AT DORT HWY
SCALE: 1"=100'



#2 - SOUTHBOUND I-75 AT DORT HWY
SCALE: 1"=100'



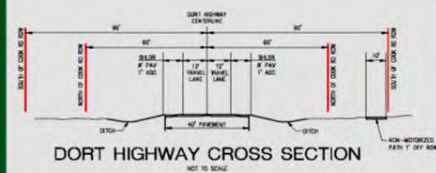
#3 - DORT HWY AND COOK RD INTERSECTION
SCALE: 1"=100'



#4 - DORT HWY AND BALDWIN RD INTERSECTION
SCALE: 1"=100'

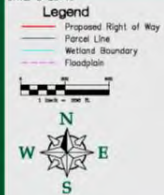
Description:

DORT HIGHWAY - BALDWIN RD TO I-75, 2 LANES WITH STANDARD INTERSECTION AT COOK ROAD AND ROUNDABOUTS AT SB I-75 RAMP AND NB I-75 RAMP AND DORT HIGHWAY.



OPTION #1 - ROUNDABOUT DATA	
Criteria Element	Connection Option #1 (West Route)
Sight Vision	Roundabout Sight distance will not be an issue
Geometrics	610' from I-75 bridge to Roundabout. Shifting NB, proposed road super-elevation cross slope is the opposite of the existing bridge cross slope. The flat area for the roundabout will help smooth this transition.
Traffic Flow	Roundabout will keep traffic flowing during peak traffic periods.
Safety	Roundabouts reduce severity of crashes.
Flood Plain	2047 CVD (4)
Wetlands	4.65 acres (projects will require mitigation)
Parade	11 parcels impacted (7 excluding Greenway and C1)
Cultural	None Antiquated
Microclimate	Would require less earthwork than Option 1 - Termed
	Option impacts wetland field instead of residential (historic) property

DATE: 5-25-16



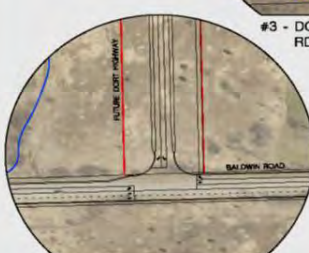
#1 - NORTHBOUND I-75 AT DORT HWY
SCALE: 1"=50'



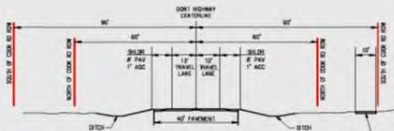
#2 - SOUTHBOUND I-75 AT DORT HWY
SCALE: 1"=50'



#3 - DORT HWY AND COOK RD INTERSECTION
SCALE: 1"=50'



#4 - DORT HWY AND BALDWIN RD INTERSECTION
SCALE: 1"=50'



DORT HIGHWAY CROSS SECTION
NOT TO SCALE

DORT HIGHWAY ALTERNATES

OPTION #1 TERMINAL

Description:
 DORT HIGHWAY - BALDWIN RD TO I-75, 2 LANES WITH STANDARD INTERSECTION AT COOK ROAD AND TERMINAL CONNECTIONS AT SB I-75 RAMP AND NB I-75 RAMP AND DORT HIGHWAY.



OPTION #1 - TERMINAL DATA	
Criteria Element	Connection Option #1 (West Route)
Sight Vision	Terminal Possible sight vision issues at SB terminal and SB DORT Highway traffic
Geometrics	Approx 820' from I-75 bridge to Terminal. Driving NB, proposed road super-elevation cross slope is the opposite of the existing bridge cross slope. Transition length would be less than desirable. Bridge rehabilitation would be necessary.
Traffic Flow	Traffic signal needed.
Safety	Stop condition turning into flow flow DORT Highway. Left turn into SB I-75 lane.
Flood Plain	10041 CSD (6)
Wetlands	4.85 acres (impacts will require mitigation)
Parcels	11 parcels impacted (7 including Gervase and C2)
Cultural	None Anticipated
Miscellaneous	Option impacts would fall instead of residential (historic) property

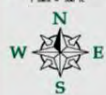
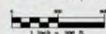
DORT HIGHWAY ALTERNATES

OPTION #2 TERMINAL

DATE: 5-25-16

Legend

- Proposed Right of Way
- Parcel Line
- Wetland Boundary
- Floodplain



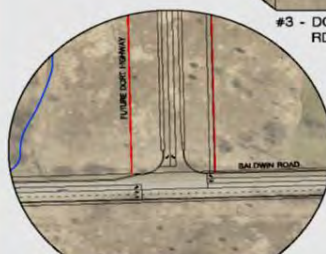
#1 - NORTHBOUND I-75
AT DORT HWY
SCALE: 1"=100'



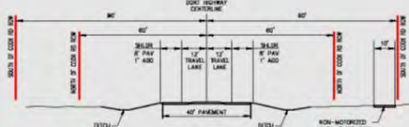
#2 - SOUTHBOUND I-75
AT DORT HWY
SCALE: 1"=100'



#3 - DORT HWY AND COOK
RD INTERSECTION
SCALE: 1"=100'



#4 - DORT HWY AND BALDWIN
RD INTERSECTION
SCALE: 1"=100'



DORT HIGHWAY CROSS SECTION
NOT TO SCALE

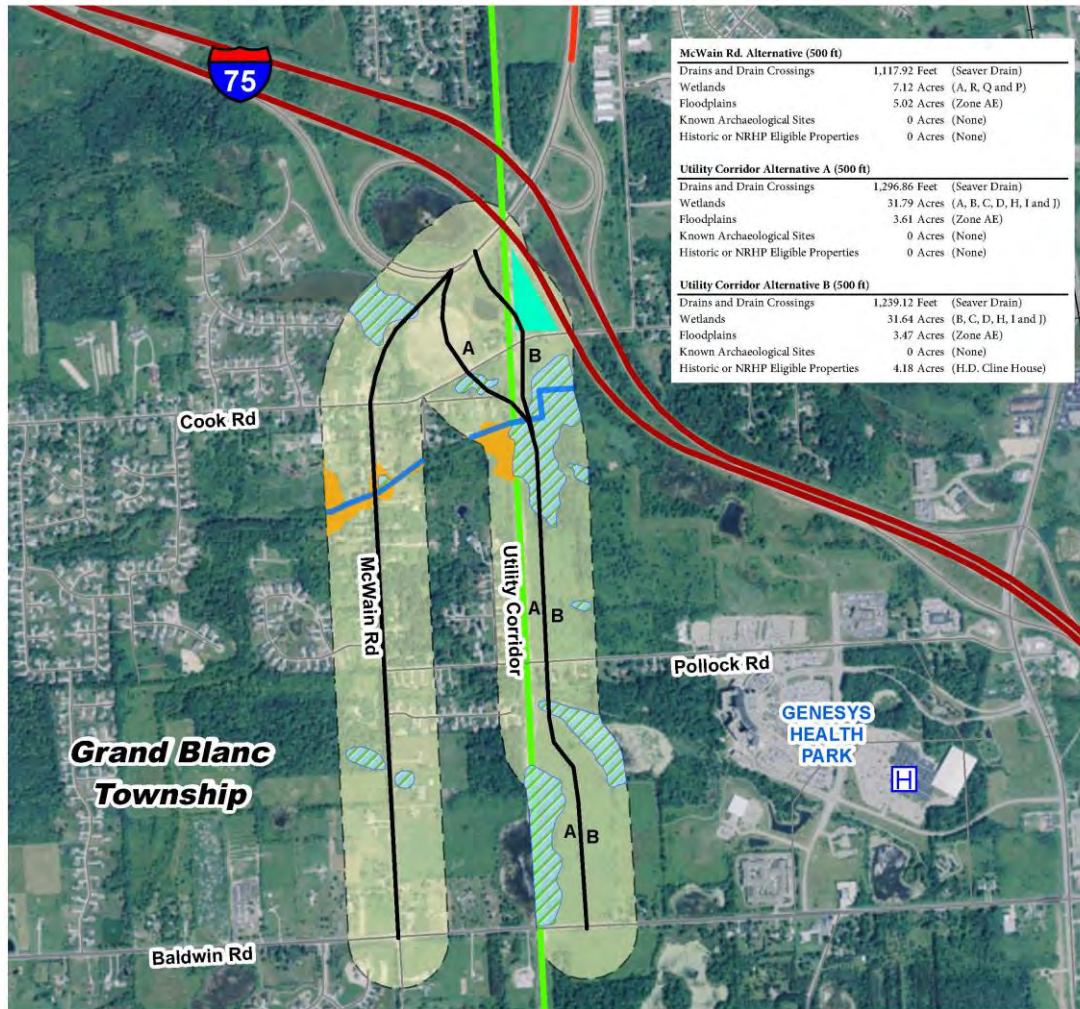
Description:

DORT HIGHWAY - BALDWIN RD TO I-75, 2 LANES WITH ROUNDABOUT AT COOK ROAD AND TERMINAL CONNECTIONS AT SB I-75 RAMP AND NB I-75 RAMP AND DORT HIGHWAY.



OPTION #2 - TERMINAL DATA	
Criteria	Connection Option #2 (East Route)
Element	Terminal
Sight Vision	Possible sight distance issues w/ SB off-ramp and stop condition
Geometrics	300' from center of terminal to bridge deck
Traffic Flow	Traffic signal may be needed
Safety	Stop condition turning onto free flow exiting Dort Highway
Flood Plain	13304 CVD (10)
Wetlands	6.2 acres (Impacts will require mitigation)
Parcels	8 parcels impacted (4 including Garveys and C3)
Culture	3035 East Cook Road - recommended National Register eligible
Miscellaneous	Historic property impacts, please proposed roadway too close to I-75/Cook Road bridge

Alignment Alternatives Environmental / Cultural Constraints

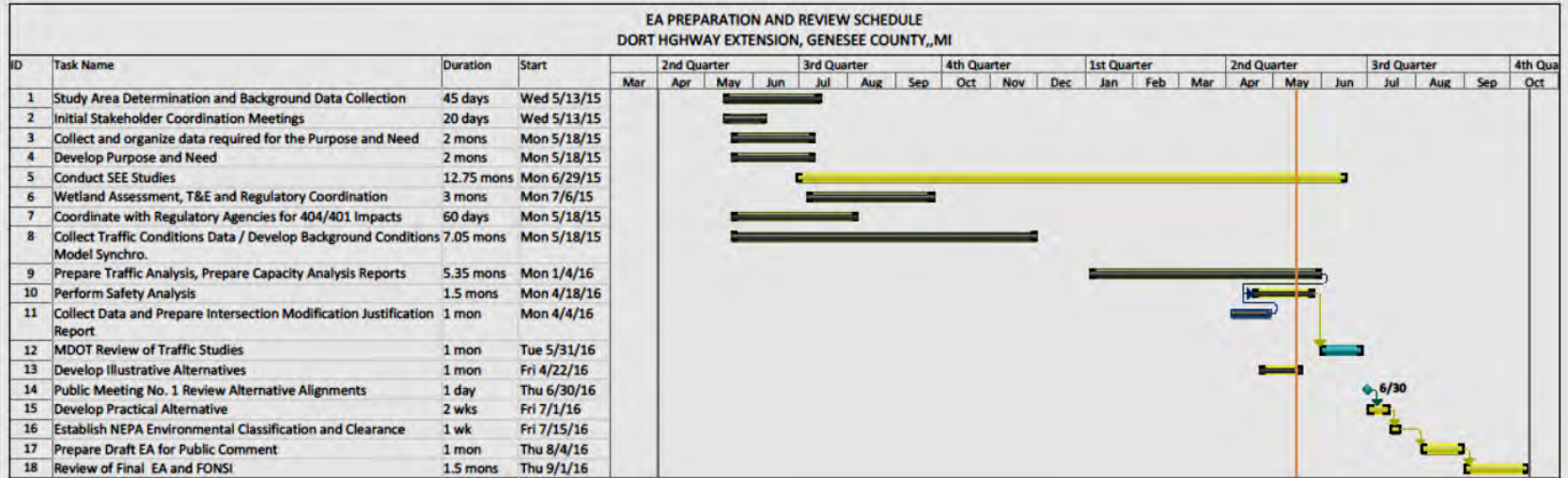


Legend

- Alignment Alternatives
- EA Limits
- Drain Crossings (500 ft)
- Wetland Boundaries (500 ft)
- Floodplain A, AE, AO (500 ft)
- Archaeological Sites (500 ft)
- Historic or NRHP Eligible Properties (500 ft)
- Railroad
- Freeway
- Dort Highway (Existing)
- Roadways
- Utility Corridor




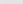
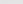


ENVIRONMENTAL ASSESSMENT SCHEDULE



Project: DORT HIGHWAY EXTENSION
4-28-16update_EAPProjectSchedule.mpp
Date: Mon 5/16/16

Task		External Tasks
Split		External Milestone
Milestone		Inactive Task
Summary		Inactive Milestone
Project Summary		Inactive Summary

-  Manual Task
-  Duration-only
-  Manual Summary Rollup
-  Manual Summary
-  Start-only

c

Finish-only
Deadline
Progress

↓

COMMENTS

